

4 Bed Townhouse For Sale

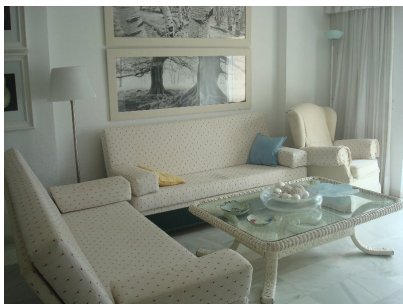
€680,000

Estepona, Costa del Sol, Málaga

Ref: R188101

Townhouse - Terraced, Estepona, Costa del Sol. 4 Bedrooms, 4 Bathrooms, Built 180 m², Terrace 60 m². Setting : Beachfront, Commercial Area, Beachside, Village, Close To Port, Close To Shops, Close To Sea, Close To Schools, Close To Forest, Close To Marina, Urbanisation. Orientation : South. Condition : Excellent. Pool : Communal. Climate Control : Air Conditioning, Hot A/C, Cold A/C, Fireplace. Views : Sea, Mountain, Port, Panoramic, Garden, Pool. Features : Fitted Wardrobes, Near Transport, Private Terrace, Solarium, Satellite TV, Ensuite Bathroom, Wood Flooring, Disabled Access, Barbeque, Double Glazing. Furniture : Fully Furnished. Kitchen : Fully Fitted. Garden : Communal, Landscaped. Security : Gated Complex, Entry Phone, 24 Hour Security. Parking : Communal, Private. Utilities : Ele...

Gallery



Property Description

Location: Estepona, Costa del Sol, Málaga, Spain

Townhouse - Terraced, Estepona, Costa del Sol.

4 Bedrooms, 4 Bathrooms, Built 180 m², Terrace 60 m².

Setting : Beachfront, Commercial Area, Beachside, Village, Close To Port, Close To Shops, Close To Sea, Close To Schools, Close To Forest, Close To Marina, Urbanisation.

Orientation : South.

Condition : Excellent.

Pool : Communal.

Climate Control : Air Conditioning, Hot A/C, Cold A/C, Fireplace.

Views : Sea, Mountain, Port, Panoramic, Garden, Pool.

Features : Fitted Wardrobes, Near Transport, Private Terrace, Solarium, Satellite TV, Ensuite Bathroom, Wood Flooring, Disabled Access, Barbeque, Double Glazing.

Furniture : Fully Furnished.

Kitchen : Fully Fitted.

Garden : Communal, Landscaped.

Security : Gated Complex, Entry Phone, 24 Hour Security.

Parking : Communal, Private.

Utilities : Electricity, Drinkable Water, Telephone.

Category : Luxury.

Additional Info

For Sale	Beds: 4	Baths: 4
Type: Townhouse	Area: 240 sq m	Pool
Setting: Beachfront	Commercial Area	Beachside
Village	Close To Port	Close To Shops
Close To Sea	Close To Schools	Close To Forest
Close To Marina	Urbanisation	Orientation: South
Condition: Excellent	Pool: Communal	Climate Control: Air Conditioning
Hot A/C	Cold A/C	Fireplace
Views: Sea	Mountain	Port
Panoramic	Garden	Pool
Fitted Wardrobes	Near Transport	Private Terrace
Solarium	Satellite TV	Ensuite Bathroom
Wood Flooring	Access for people with reduced mobility	Barbeque
Double Glazing	Furniture: Fully Furnished	Kitchen: Fully Fitted
Garden: Communal	Landscaped	Security: Gated Complex

Entry Phone	24 Hour Security	Parking: Communal
Private	Utilities: Electricity	Drinkable Water
Telephone	Category: Luxury	Internal Area : 240 sq m