

## Residential Plot For Sale

**€290,000**

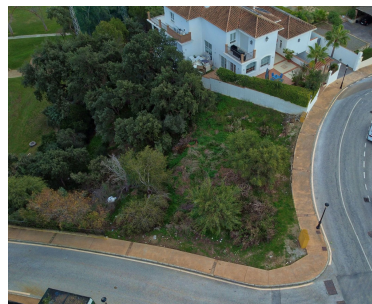
**Elviria, Costa del Sol, Málaga**

**Ref: R4229827**

Plot excellently located in the area of Elviria, where the best beaches of Marbella are found, bordering the Santa María Golf & Country Club, in a quiet residential area of villas and urbanisations. At a short distance, there are several commercial areas, with supermarkets, restaurants, pharmacy, schools, church and health centre. The beaches of Elviria are only 7 minutes away by car. Along this coastline to the town of Marbella, you will find the most fashionable beach bars, called "chiringuitos", a variety to suit all tastes: family, elegant, modern or traditional, with live music or shows... they will make your sunny days and long nights by the Mediterranean Sea unforgettable. The international airport of Malaga Pablo Ruiz Picasso is 45 km away, with easy access to the m...



# Gallery



# Property Description

**Location:** Elviria, Costa del Sol, Málaga, Spain

Plot excellently located in the area of Elviria, where the best beaches of Marbella are found, bordering the Santa María Golf & Country Club, in a quiet residential area of villas and urbanisations.

At a short distance, there are several commercial areas, with supermarkets, restaurants, pharmacy, schools, church and health centre.

The beaches of Elviria are only 7 minutes away by car. Along this coastline to the town of Marbella, you will find the most fashionable beach bars, called "chiringuitos", a variety to suit all tastes: family, elegant, modern or traditional, with live music or shows... they will make your sunny days and long nights by the Mediterranean Sea unforgettable.

The international airport of Malaga Pablo Ruiz Picasso is 45 km away, with easy access to the motorway.

This plot is the perfect location to build your dream home..... If you wish, our collaborators, a team of professional architects will be happy to help you make this dream come true.

Plot size: 1.060m<sup>2</sup>. Buildable area (not including basement): 285m<sup>2</sup>. Occupation of space: 25% 265m<sup>2</sup>.

Please do not hesitate to contact us for further information.

## Additional Info

For Sale	Type: Residential Plot	Area: 285 sq m
Land Area: 1060 sq m	Setting: Frontline Golf	Close To Golf
Close To Shops	Close To Sea	Close To Schools
Orientation: South West	Pool: Room For Pool	Views: Sea
Golf	Urban	Street
Utilities: Electricity	Drinkable Water	Telephone
Gas	Category: Bargain	Cheap
Golf	Holiday Homes	Investment
Off Plan	Reduced	Resale
Contemporary	Internal Area : 285 sq m	Land Size : 1060 sq m