

Residential Plot For Sale

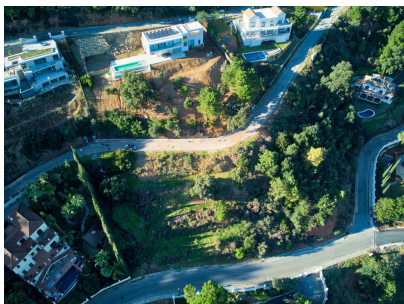
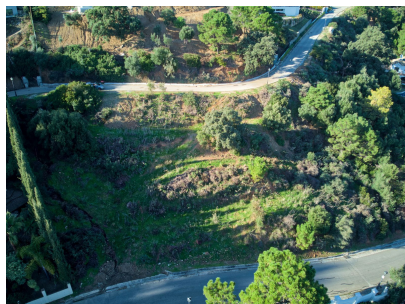
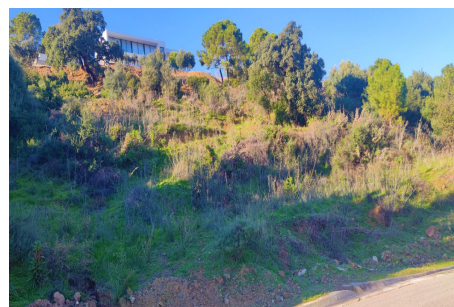
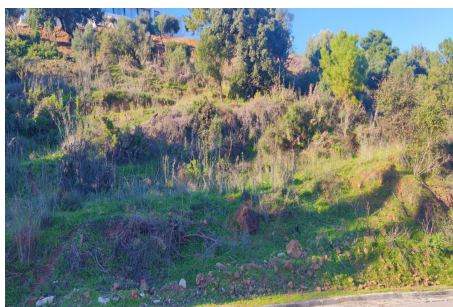
Benahavís, Costa del Sol, Málaga

€385,000

Ref: R4227529

Magnificent plot situated in Benahavís, in the exclusive urbanization of Montemayor, an ideal location that combines the peace and tranquillity of the mountains with the security of a gated community, next to several golf courses and 15 minutes from the beach, enjoying all the privileges of the Costa del Sol. In terms of the surrounding area, it is halfway between Marbella (25km) and Estepona (19 km), and can also be reached from Malaga International Airport or Gibraltar Airport in just one hour. It has a south-east orientation, with the blue Mediterranean Sea in the background. It has a project for a detached house with swimming pool adapted for people with reduced mobility and a building license, adaptable to the demand of the future owner. Plot size: 2.100m². Buildable area (not i...

Gallery



Property Description

Location: Benahavís, Costa del Sol, Málaga, Spain

Magnificent plot situated in Benahavís, in the exclusive urbanization of Montemayor, an ideal location that combines the peace and tranquillity of the mountains with the security of a gated community, next to several golf courses and 15 minutes from the beach, enjoying all the privileges of the Costa del Sol.

In terms of the surrounding area, it is halfway between Marbella (25km) and Estepona (19 km), and can also be reached from Malaga International Airport or Gibraltar Airport in just one hour.

It has a south-east orientation, with the blue Mediterranean Sea in the background.

It has a project for a detached house with swimming pool adapted for people with reduced mobility and a building license, adaptable to the demand of the future owner.

Plot size: 2.100m². Buildable area (not including basement): 256m². Occupation of space: 25% 525m².

Please do not hesitate to contact us for further information.

Additional Info

For Sale	Type: Residential Plot	Area: 256 sq m
Land Area: 2100 sq m	Setting: Country	Close To Golf
Close To Town	Close To Forest	Urbanisation
Orientation: South East	Pool: Room For Pool	Views: Sea
Mountain	Country	Panoramic
Forest	Access for people with reduced mobility	Garden: Private
Security: Gated Complex	24 Hour Security	Parking: Private
Utilities: Electricity	Drinkable Water	Category: Bargain
Golf	Holiday Homes	Investment
Luxury	Off Plan	Resale
With Planning Permission	Internal Area : 256 sq m	Land Size : 2100 sq m