



2 Bed New Development For Sale

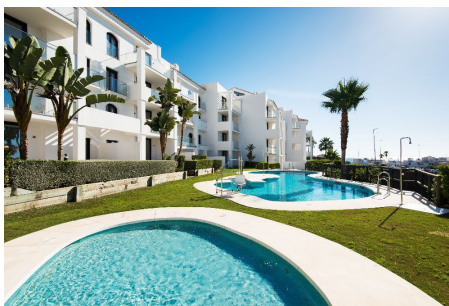
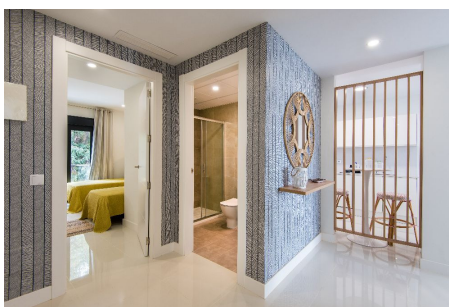
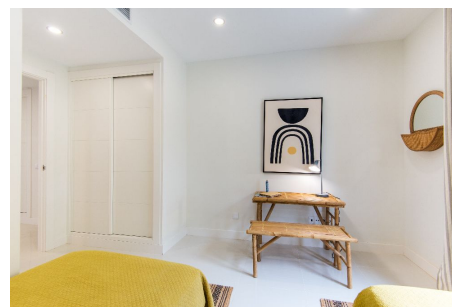
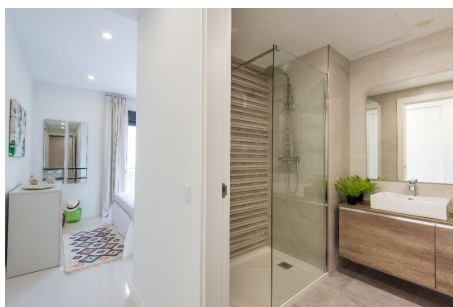
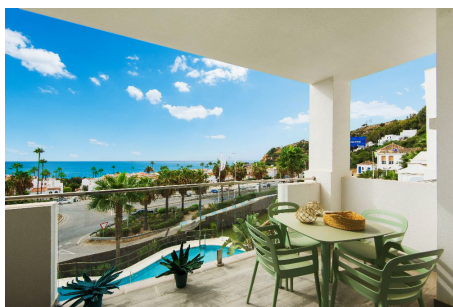
Manilva, Costa del Sol, Málaga

€211,000

Ref: R3938554

New Development: Prices from €211,000 to €211,000. [Beds: 2 - 2] [Baths: 2 - 2] [Built size: 89.00 m2 - 89.00 m2]
KEY READY & THE BEST VALUE FOR MONEY ON THE COST KEY READY - KEY READY - KEY READY READY TO
MOVE IT/ there are already clients living in 85% SOLD NO WHATSAPP REGISTER LAST 3 BED UNIT AVAILABLE!
ONLY 3 2 BEDROOMS UNITS AVAILABLE Discover this development of 43 beachfront homes, WITH SEA VIEWS
from all apartments and in a private residential area with a swimming pool and green areas. Visit the pilot house
now and let yourself be conquered by the tranquility and exclusivity of Manilva, Malaga. This is a development with
sea views just 50 m from the beach. The development is located between the La Duquesa and Sotogrande marinas
and close to different golf cou...

Gallery



Property Description

Location: Manilva, Costa del Sol, Málaga, Spain

New Development: Prices from €211,000 to €211,000. [Beds: 2 - 2] [Baths: 2 - 2] [Built size: 89.00 m2 - 89.00 m2]

KEY READY & THE BEST VALUE FOR MONEY ON THE COST

KEY READY - KEY READY - KEY READY

READY TO MOVE IT/ there are already clients living in

85% SOLD

NO WHATSAPP REGISTER

LAST 3 BED UNIT AVAILABLE!

ONLY 3 2 BEDROOMS UNITS AVAILABLE

Discover this development of 43 beachfront homes, WITH SEA VIEWS from all apartments and in a private residential area with a swimming pool and green areas. Visit the pilot house now and let yourself be conquered by the tranquility and exclusivity of Manilva, Malaga.

This is a development with sea views just 50 m from the beach. The development is located between the La Duquesa and Sotogrande marinas and close to different golf courses, with restaurants and all the services you may need at your fingertips.

2 or 3 bedroom homes with a modern design and luxury finishes. The homes have spacious and very bright rooms in which the clear protagonists are the sea and the sun.

If you still do not know this development, do not hesitate, request your visit, you will fall in love with its light, its open spaces, quality and, of course, its incredible views of the sea.

Additional Info

For Sale	Beds: 2	Baths: 2
Type: New Development	Area: 140 sq m	Land Area: 56 sq m
Orientation: South East	Internal Area : 140 sq m	Land Size : 56 sq m