

4 Bed Townhouse For Sale

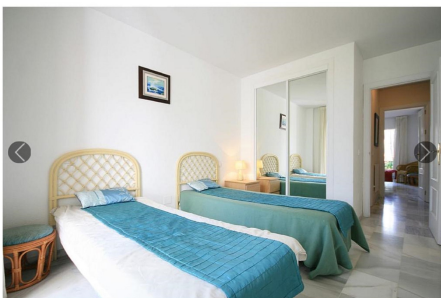
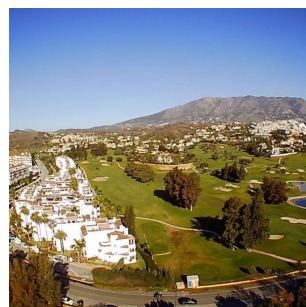
€470,000

Fuengirola, Costa del Sol, Málaga

Ref: R3994237

Beautiful townhouse close to the castle in fuengirola this is a very spacious house in a perfect location close to both the beach and also the centre of Fuengirola shopping area. Townhouse, Fuengirola, Costa del Sol. 4 Bedrooms, 3 Bathrooms, Built 240 m², Terrace 40 m², Garden/Plot 185 m². Setting : Commercial Area, Close To Shops, Close To Sea, Close To Town, Close To Schools, Urbanisation. Orientation : South East. Condition : Good. Climate Control : Air Conditioning. Views : Mountain, Street. Features : Covered Terrace, Fitted Wardrobes, Near Transport, Private Terrace, Utility Room, Ensuite Bathroom, Double Glazing, Fiber Optic. Furniture : Part Furnished. Kitchen : Fully Fitted. Garden : Private.

Gallery



Property Description

Location: Fuengirola, Costa del Sol, Málaga, Spain

Beautiful townhouse close to the castle in fuengirola

this is a very spacious house in a perfect location close to both the beach and also the centre of Fuengirola shopping area.

Townhouse, Fuengirola, Costa del Sol.

4 Bedrooms, 3 Bathrooms, Built 240 m², Terrace 40 m², Garden/Plot 185 m².

Setting : Commercial Area, Close To Shops, Close To Sea, Close To Town, Close To Schools, Urbanisation.

Orientation : South East.

Condition : Good.

Climate Control : Air Conditioning.

Views : Mountain, Street.

Features : Covered Terrace, Fitted Wardrobes, Near Transport, Private Terrace, Utility Room, Ensuite Bathroom, Double Glazing, Fiber Optic.

Furniture : Part Furnished.

Kitchen : Fully Fitted.

Garden : Private.

Additional Info

For Sale	Beds: 4	Baths: 3
Type: Townhouse	Area: 280 sq m	Land Area: 185 sq m
Setting: Commercial Area	Close To Shops	Close To Sea
Close To Town	Close To Schools	Urbanisation
Orientation: South East	Condition: Good	Climate Control: Air Conditioning
Views: Mountain	Street	Covered Terrace
Fitted Wardrobes	Near Transport	Private Terrace
Utility Room	Ensuite Bathroom	Double Glazing
Fiber Optic	Furniture: Part Furnished	Kitchen: Fully Fitted
Garden: Private	Internal Area : 280 sq m	Land Size : 185 sq m